

**STAR** International  
**VIEW**

[www.starviewint.net](http://www.starviewint.net)

Starview International Private Limited (SVI) is a specialist manufacturer of active and passive optical components used in high speed optical data networks. SVI is also a Value Added Distributor (VAD) of Optical + Ethernet (O+E) solutions in Transmission and Access networks. Our major customers are Service Providers, Enterprises and Governments.

### Starview Products

SVI manufactures her own range of Starview branded products such as transceiver modules, STARPOD, STARTAP, STARMUX, optical patch cables, attenuators, couplers, and adapters.

SVI offers a wide variety of transceiver modules such as GBIC, SFP, SFP+, XFP, XENPAK, X2, QSFP+ and CFP2. All SVI transceiver modules are MSA compliant. These modules can be remotely programmed in the field using STARPOD (Starview Programmable Optical Device). This unique feature provides flexibility to our customers to use a common SVI transceiver module to support multiple brands of networking equipment.

SVI also offers a wide range of optical accessories:

- **STARTAP (Starview Tap)**

Modular network taps to split the optical fibers with customized tap ratios for network monitoring purpose;

- **STARMUX (Starview Multiplexer)**

Compact passive CWDM (Coarse Wavelength Division Multiplexing) to alleviate fiber congestion. The key advantage is to combine up to 18 applications of data rates ranging from 100Mbps to 10Gbps over a single fiber core. The OADM (Optical Add Drop Multiplexing) allows applications to add-drop along the CWDM optical path;

- **Optical patch cables**

Pre-terminated in factory using bend-insensitive fiber to ensure reliable interconnection of the networking equipment;

- **Optical accessories**

Attenuators, couplers and adapters ensure reliable network communications with optimum signal quality and performance.

### Technology Partners

SVI partners with leading technology vendors to provide the most efficient and effective networking solutions.

SVI offers Optical + Ethernet (O+E) solutions in Transmission and Access networks. This includes Coarse/ Dense Wavelength Division Multiplexing (C/DWDM), Layer 2 Switching, Media Conversion, Ethernet Demarcation, Mobile Backhauling, Legacy SDH/ SONET, Network Tapping/Monitoring, 4th Generation Wireless Access Point (WAP), Service Level Assurance, Gigabit Passive Optical Networking (GPON), Unified Communication Solution, Bonding router with WAN Virtualization, Industrial Ethernet and OTU Multiplexing.

### Starview Maintenance and Support (SMART)

SVI provides SMART services such as Help Desk, Service Level Agreements, SMART services such as deployment services, structured cabling installation, design and drawing services, CPE deployment, remote technical support; Preventive maintenance such as on-site support, hardware maintenance and software maintenance; Installation and Commissioning services such as service material arrangement and staging services; SMART training and extended warranty. Customers can activate these services via hotline, web portal and email.

# About StarView International

I ? / ' 9i fc 'GU`Yg7 cbHJWw

Gc `8 jgfjVi hcb`@X  
5 fhj`Yfm6i gjbYgg'DUf\_  
DUf\_ <U`žC gk Ygfm  
G\ fc d g\ jfY žGM%%( 58 žI ?  
HY: +( ( f\$E%\* - %\*, \$; ' \$

9a UJ: Ybei jfjYg4 gc`lX jgfjVi hcb"Wc"i \_  
K YV: k k k "gc`lX jgfjVi hcb"Wc"i \_

For technical support,  
Please email [support@starviewint.com](mailto:support@starviewint.com)

## 3 Channels of Contact

**SMART  
Help Desk**

**Tel: 6100 3375 (6100 desk)  
Immediate/Urgent attention**

**Email: [support@starviewint.com](mailto:support@starviewint.com)**

**Web: [www.starviewint.com/support](http://www.starviewint.com/support)**



All incidents are logged  
Email and web-based request will automatically generate a ticket



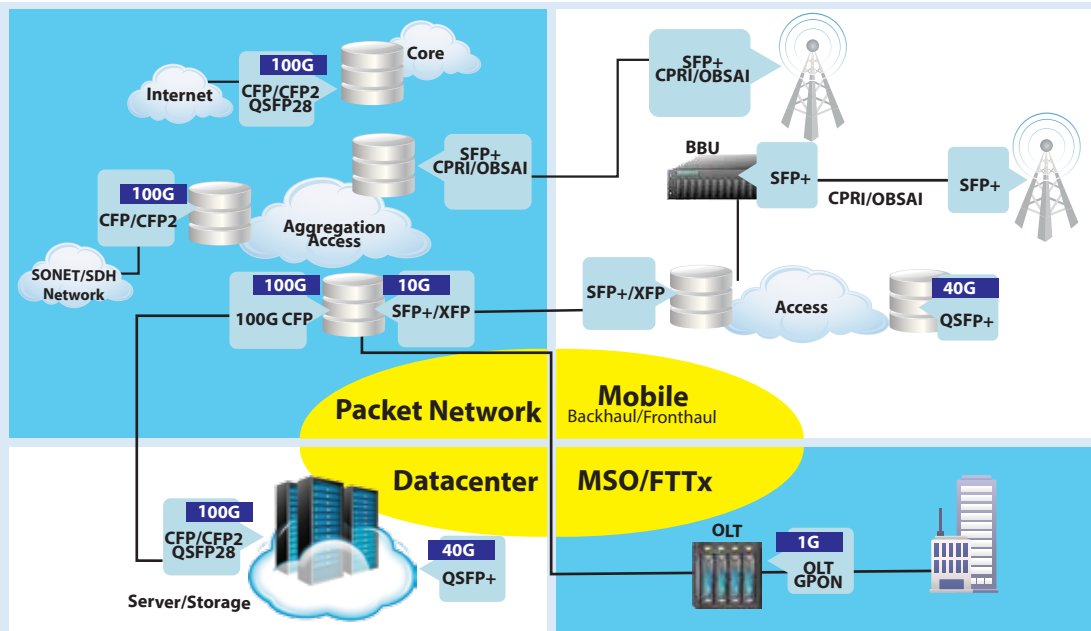
Scan QR code to use **Online Assistance** to buy transceivers

This is an online tool to help you select an equivalent Starview part number. Simply enter the original manufacturer's part number to find out the equivalent Starview part number to order. You may also do a wildcard search by entering a partial part number.

## Transceiver Selection

Basic key considerations when selecting a Transceiver are as follows:

1. Protocol/data rate of application
2. Optical transmission distance/ Optical budget required for the link
3. Type of fiber used:
  - Singlemode /Multimode/ CWDM/ DWDM
  - Dual Fiber/Single Fiber
4. Optical transmitting wavelength
5. Transceiver Form Factor: SFP, SFP+,XFP, GBIC, CFP and etc.
6. DDM
7. Operating environment and condition (normal temp or high temp)
8. Type of equipment to be used



# Transceivers



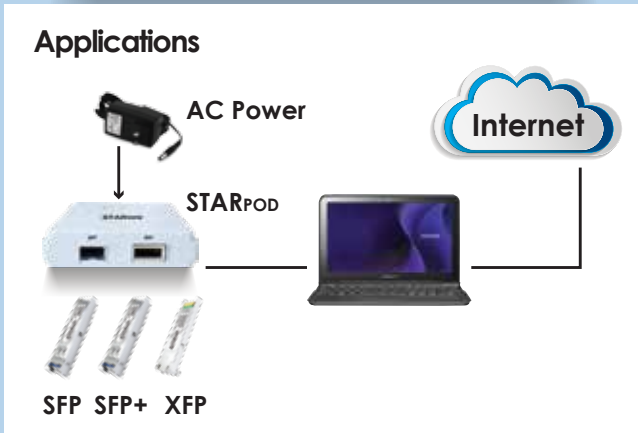
<b>SFP</b> <ul style="list-style-type: none"> <li>• Copper SFP Modules (10/100/1000 and 1000)</li> <li>• Dual Fiber Strands SFP Modules</li> <li>• CWDM Dual Fiber Strands SFP Modules</li> <li>• C and L Band DWDM Dual Fiber Strands SFP Modules</li> <li>• Single Fiber Strand (Bi-Di) SFP Modules</li> <li>• Serial Gigabit Media Independent Interface (SGMII)</li> <li>• Gigabit Passive Optical Network (GPON)</li> </ul>	<b>SFP+</b> <ul style="list-style-type: none"> <li>• Active Optical Cable with pre-terminated lengths</li> <li>• Dual Fiber Strands SFP+ Modules</li> <li>• CWDM Dual Strands SFP+ Modules</li> <li>• C Band DWDM Dual Fiber Strands SFP+ Modules</li> <li>• C Band DWDM Dual Fiber Strands SFP+ Modules</li> <li>• Single Fiber Strand (Bi-Di) SFP+ Modules</li> </ul>	<b>XFP</b> <ul style="list-style-type: none"> <li>• Dual Fiber Strands XFP Modules</li> <li>• CWDM Dual Strands XFP Modules</li> <li>• C Band DWDM Dual Fiber Strands XFP Modules</li> <li>• Tunable C-Band DWDM Dual Fiber Strands XFP Module</li> <li>• Single Fiber Strand (Bi-Di) XFP Modules</li> </ul>	<b>GBIC</b> <ul style="list-style-type: none"> <li>• Copper GBIC Modules</li> <li>• Dual Fiber Strands GBIC Modules</li> <li>• CWDM Dual Fiber Strands GBIC Modules</li> <li>• Single Fiber Strand (Bi-Di) GBIC Modules</li> </ul>	<b>X2</b> <ul style="list-style-type: none"> <li>• Dual Fiber Strands X2 Modules</li> <li>• CWDM Dual Strands X2 Modules</li> <li>• C Band DWDM Dual Fiber Strands X2 Modules</li> </ul>
<b>XENPAK</b> <ul style="list-style-type: none"> <li>• Dual Fiber Strands XENPAK Modules</li> <li>• CWDM Dual Strands XENPAK Modules</li> <li>• C Band DWDM Dual Fiber Strands XENPAK Modules</li> </ul>	<b>QSFP</b> <ul style="list-style-type: none"> <li>• Active Optical Cable with QSFP pre-terminated lengths</li> <li>• Active Optical Cable with QSFP and SFP+ pre-terminated lengths</li> <li>• MPO Fiber QSFP+ Modules</li> <li>• Dual Fiber Strands QSFP+ Modules</li> </ul>	<b>QSFP28</b> <ul style="list-style-type: none"> <li>• Active Optical Cable with QSFP pre-terminated lengths</li> <li>• Active Optical Cable with QSFP28 and QSFP pre-terminated lengths</li> <li>• MPO Fiber QSFP+ Modules</li> <li>• Dual Fiber Strands QSFP+ Modules</li> </ul>	<b>CFP</b> <ul style="list-style-type: none"> <li>• MPO-20 Fiber CFP Modules</li> <li>• Dual Fiber Strands CFP Modules</li> </ul>	<b>CFP2</b> <ul style="list-style-type: none"> <li>• MPO-20 Fiber CFP Modules</li> <li>• Dual Fiber Strands CFP Modules</li> </ul>



# STARPOD STARPOD

## Starview Programmable Optical Device

### Applications

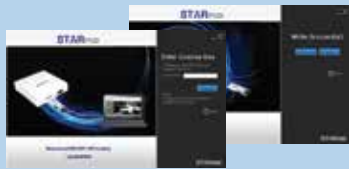


### Features

- Programming Kit for Starview SFP/SFP+/XFP
- User friendly graphical user interface(GUI)
- USB port for basic set up
- Multi-vendor programming
- Support 3rd party modules if they are not password protected.
- Requires internet connection during operation
- 1 license key for each module.
- License key is offered separately.

### STARPOD - Transceiver Coding

- |   |   |  |
|---|---|--|
| <ul style="list-style-type: none"> <li>• CISCO</li> <li>• Juniper</li> <li>• Alcatel Lucent</li> <li>• Extreme Networks</li> <li>• Force 10</li> <li>• Huawei</li> <li>• HP</li> <li>• H3C</li> <li>• Arista Networks</li> <li>• Transition Networks</li> </ul> | <ul style="list-style-type: none"> <li>• Transition Networks</li> <li>• ADVA Optical Networking</li> <li>• BTI</li> <li>• Intel</li> <li>• EXFO</li> <li>• JDSU</li> <li>• ATI</li> <li>• Tellabs</li> <li>• Nortel Networks</li> <li>• Netscout</li> </ul> | <ul style="list-style-type: none"> <li>• Adtran</li> <li>• Brocade</li> <li>• Ericsson</li> <li>• RAD</li> <li>• Avaya</li> <li>• NSN</li> <li>• VSS Monitoring</li> <li>• Gigamon</li> <li>• Cyan</li> <li>• and many more</li> </ul> |
|---|---|--|

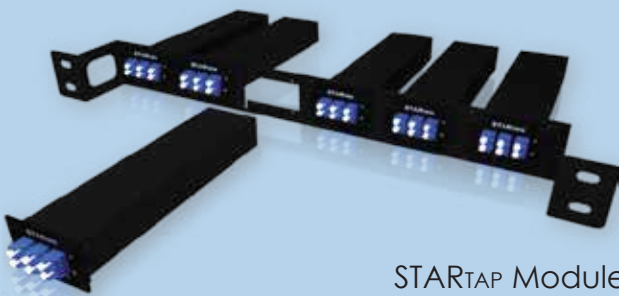


Scan to download STARPOD software

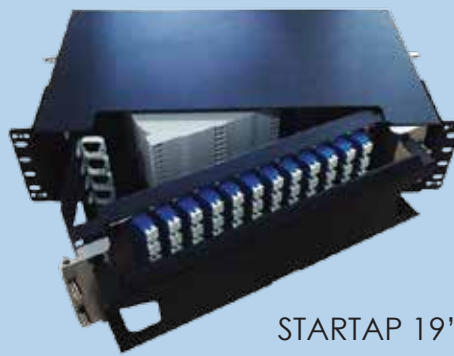
Starview Programmable Optical Device (STARPOD) is designed to allow the user to re-program Starview transceiver modules (typically SFP/ SFP+ and XFP) in the field. This flexibility to re-program the transceiver module allows the user to connect the module to interwork with multiple leading vendors. The user will save time and money to support the wide varieties of networking equipment today.

Using STARPOD with a computer, the user logs into the internet and re-program the transceiver module with a license key obtainable from Starview certified partner. The re-programming takes less than a minute for each transceiver module. After re-programming, the transceiver module can work with the leading vendor of choice. The module can be re-programmed as many times, as long as the license key is validated.

# STARTAP STARTAP

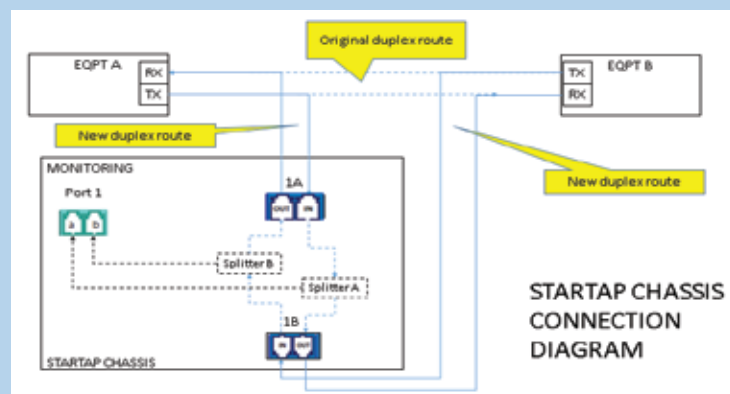


STARAP Module +Rack Mount Chassis



STARTAP 19'' 2.5 RU Chassis

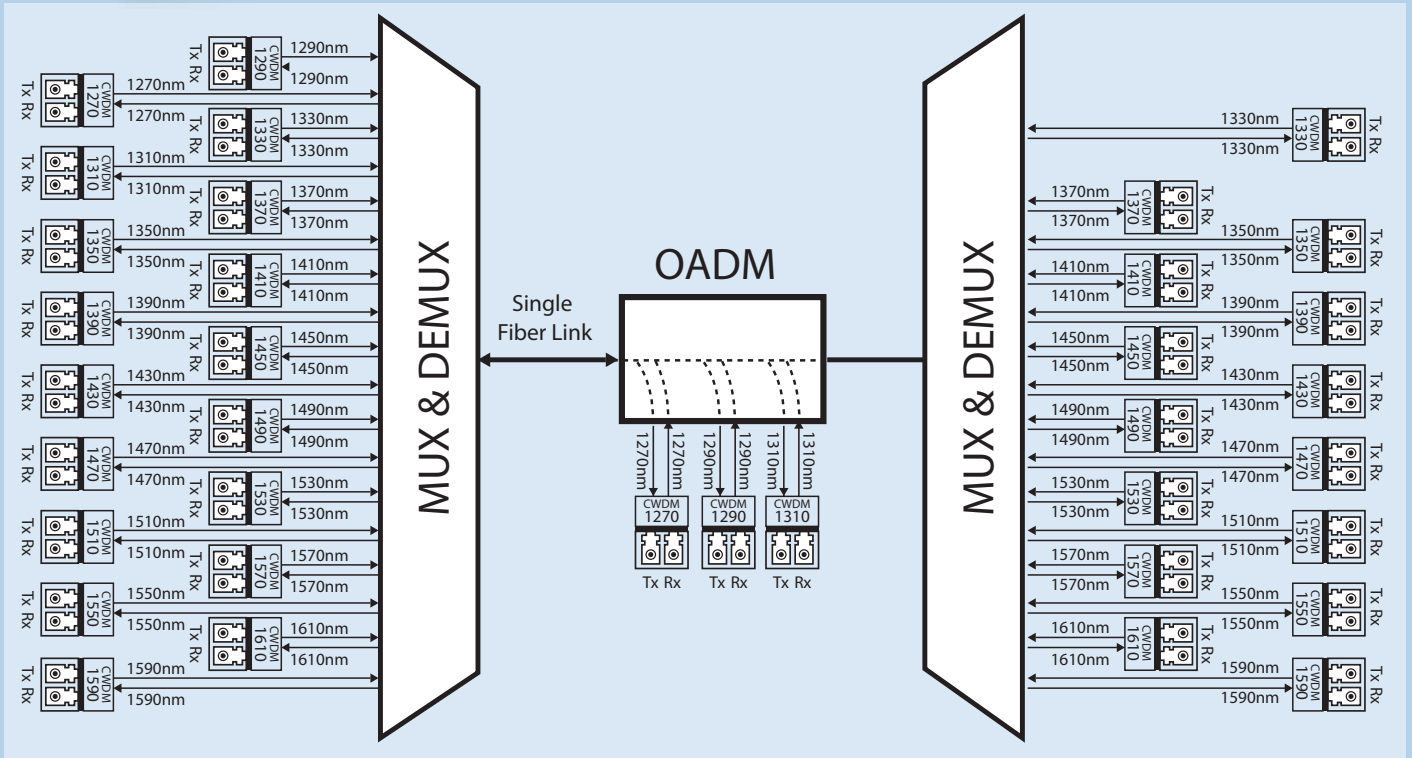
- Cost Effective
- Passive Equipment
- Compact Enclosure
- Low insertion loss
- User defined configuration for different split ratio and fiber optic types (SM/ MM)
- Flexible and Modular design with front access
- Maximum up to 32 links with monitoring ports in a 2.5RU chassis
- Industry standard color coding for fiber optic connectors



STARTAP CHASSIS CONNECTION DIAGRAM

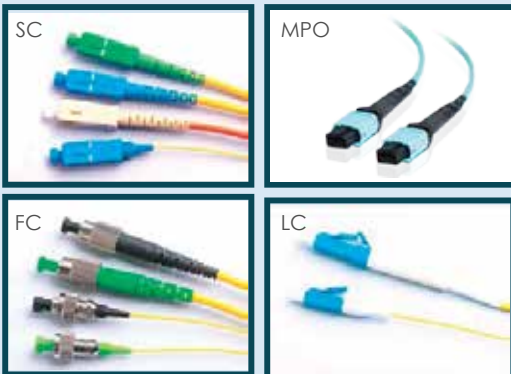


- Cost Effective
- Duplex/ Simplex WAN Fiber connection
- Metallic casing and connectors
- Passive Equipment suitable for outdoor enclosure
- Compact Enclosure
- Low insertion loss
- Maximize Fiber Usage
- Maximum 9 CH CWDM for Rack Mount Enclosure Module
- Maximum 18 CH CWDM for 19" Rack Mount able unit



## Optical Accessories

### Optical Fiber Patch Cords



- Cost Effective and fast lead time
- Low insertion loss
- Customized cable length and connectors
- Factory terminated and 100% tested
- Individually packaged with test results included
- Other optical accessories available, such as:
  - Optical Attenuators
  - Optical Adapters
  - Optical Couplers

### Optical Adapters



### Optical Attenuators



### Optical Couplers



The Optical Fiber Patch cord is available for any kind of configurations you need.

Choose a connector 1	Type of polish 2
Simplex or Duplex 3	Meters of cable 4

# Reliable, Cost Effective and Dedicated

[www.starviewint.net](http://www.starviewint.net)

For further enquiries please email [Ybei\\_jfYg@gc!X\]gf\]Vi\\_h;c b"Wc"i \\_](mailto:Ybei_jfYg@gc!X]gf]Vi_h;c b)